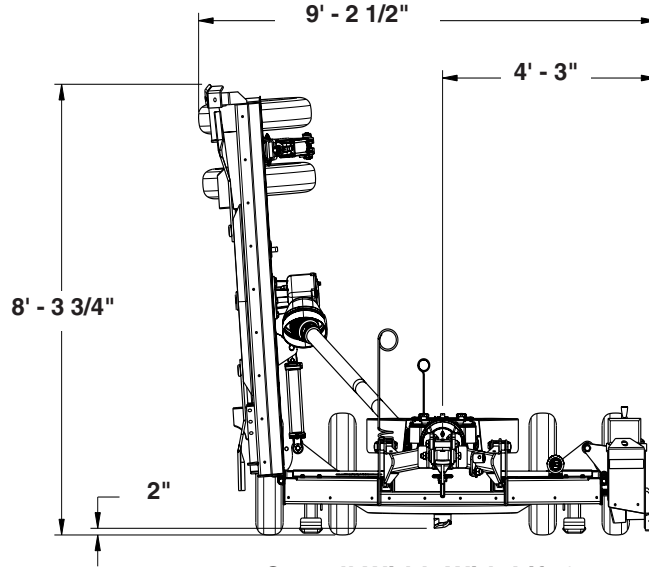


RC3614 & RCM3614 Models

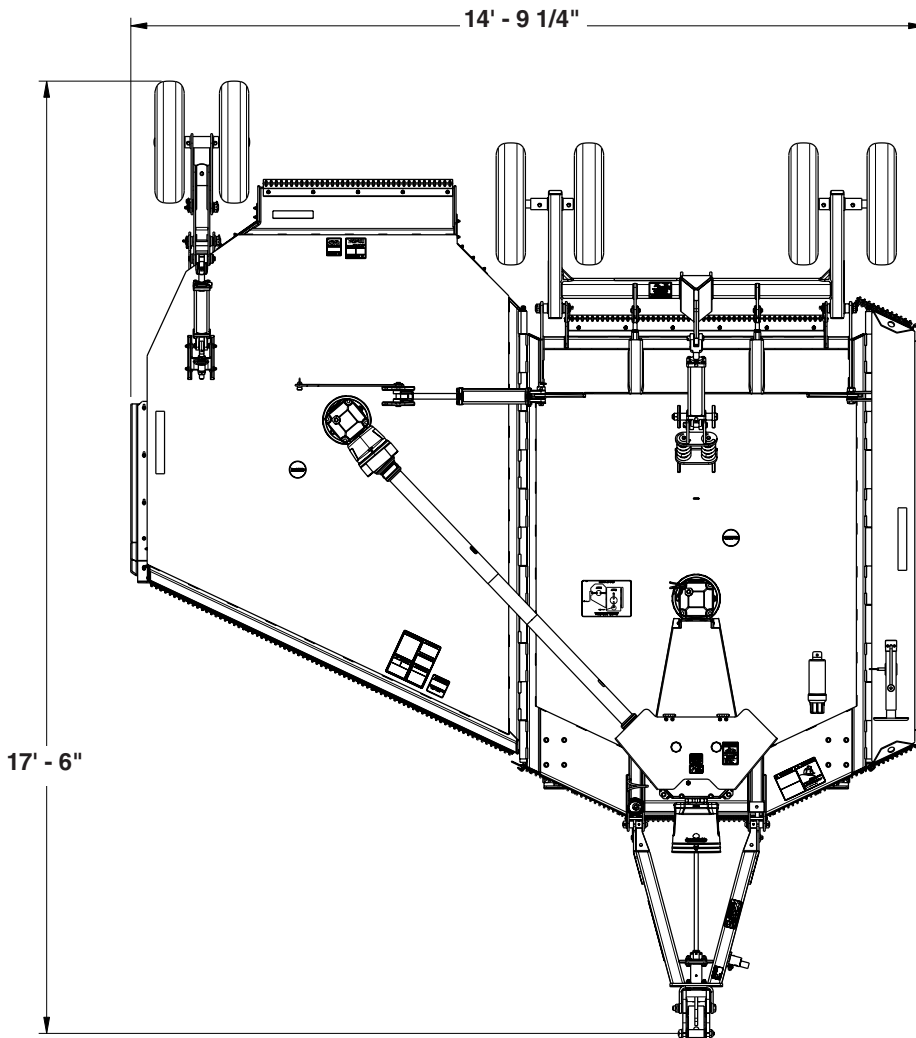
Specifications & Capacities	
Tractor horsepower	70 to 160 hp
Gearbox horsepower	250 hp Splitter 130 hp Center & Wing
Gearbox oil capacity	5.18 Pints: Divider Gearbox 6.76 Pints: Center deck, LH deck & RH deck spindle gearboxes
Gearbox lubrication	Gear Lube 80-90W EP
Cutting capacity	2"
Machine weight	Chain guards, 5 AC tires and standard clevis.
hitch weight	2,220 lbs.
total weight	5,620 lbs.
Blade tip speed	16,500 fpm
Hitch types	Optional Self-Leveling Clevis Hitch, LP Performance Hitch, Bar-Tite Hitch, Pintle Hitch, or Ball Hitch
Hitch jack	Standard (7,000 lbs.)
Signal Lights	LED
7 Pin connector	SAE J5560 pin configuration
Cutting width	13' - 6"
Overall width	14' - 9 1/4"
Minimum transport width	9' - 2 1/2" (With cutting height at 2")
Overall length	17' - 6" (With cutting height at 2")
Deck height	13"
Cutting height*	2" to 12"
Lift hydraulics	3 1/4" x 8" Rephasing hydraulic cylinder with hoses, fittings & stroke control spacers.
center deck	3" x 8" Rephasing hydraulic cylinder with hoses & fittings.
right wing	
Wing folding hydraulics	3" x 12" single-acting hydraulic cylinder complete with hose & fittings.
Wing flex	45° up, 20° down while cutting.
Deck material	1 - Piece, 10 gauge.
Side skirt material	1/4" plate.
Skid Shoes	Replaceable: 1 Standard straight skid shoe and 1 AR400 leading skid shoe
wing deck	Replaceable: 2 Skid shoes
center deck	Reversible & replaceable: 1 Skid shoe
weight box	
4 Blades (2 per carrier)	1/2" x 4" Heat Treated Free Swinging Alloy Steel with up lift.
Blade overlap	6"
Blade bolt	Keyed with hardened flat washer & locknut.
Stump jumper / blade holder	10 Gauge round dish shaped pan, reinforced with 1" x 4 1/2" blade mounting bar.
Deck ring	Optional 3/8" formed and welded.
Front & rear guards	Optional single chain or double chain.
Input driveline	ASAE Cat. 6 with constant velocity u-joint.
Intermediate & wing drivelines	Cat. 4 with slip-clutch or optional Cat. 5 with slip-clutch
Tire options	6" x 9 x 21" Laminated tires 27" x 7.75" Used aircraft tires with foam filling 29" x 9" Used aircraft tires without foam filling
Number of wheels	5 - Wheel option: 4 on transport axle and one on wing axle. 6 - Wheel option: 4 on transport axle and two on wing axle.
Standard transport axle	Spring-cushioned on center transport axle.
Axle fasteners	1 1/4" Greasable pins
Hubs	Cast iron five-bolt hubs with tapered roller bearings and 1 3/4" shafts.

* Maximum cut height is dependent on tire options selected.



33932

Overall Width With Lift & Folding Cylinders Fully Retracted



33931

Dimensions Shown Are With Lift Cylinders Fully Retracted.